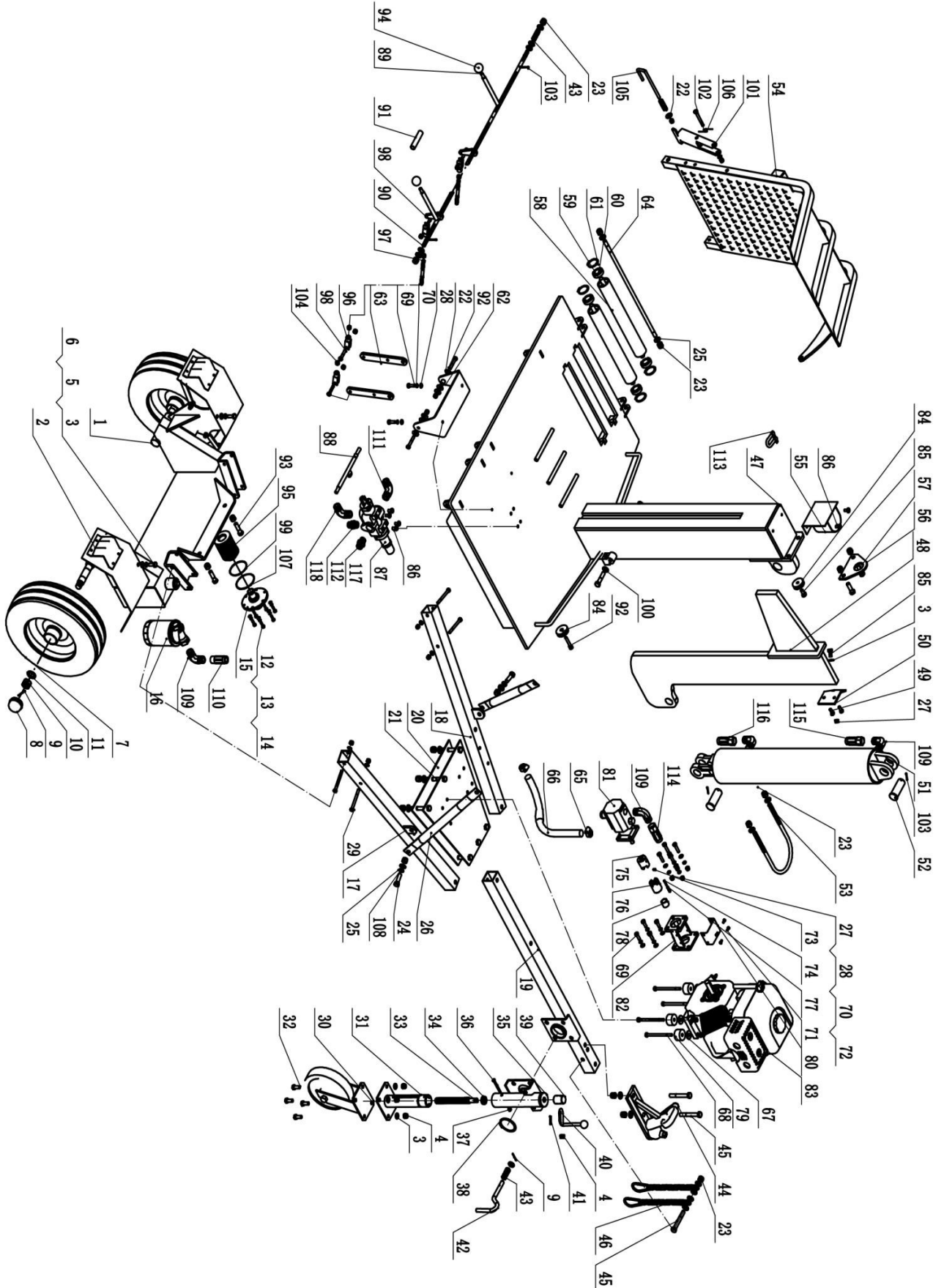


BWM LSV30H Spare Parts Diagram



Ref#	Part No.	Description	Qty
1	BWMLSV30H-001	Oil Tank	1
2	BWMLSV30H-002	Right and Left Protection Fender	2
3	BWMLSV30H-003	Flat Washer Φ10	12
4	BWMLSV30H-004	Hex Lock Nut M10	9
5	BWMLSV30H-005	Hex Bolt M10×25	6
6	BWMLSV30H-006	Spring Washer Φ10	2
7	BWMLSV30H-007	Tyre/Wheel	2
8	BWMLSV30H-008	Axle Cap	2
9	BWMLSV30H-009	Cotter Pin d4*40	3
10	BWMLSV30H-010	Slotted Nut M20×1.5	2
11	BWMLSV30H-011	Flat Washer Φ20	2
12	BWMLSV30H-012	Hex Bolt M6×20	6
13	BWMLSV30H-013	Spring Washer Φ6	6
14	BWMLSV30H-014	Flat Washer Φ6	6
15	BWMLSV30H-015	Filter Mounting Plate	1
16	BWMLSV30H-016	Outer Filter	1
17	BWMLSV30H-017	Left support bracket	1
18	BWMLSV30H-018	Right support bracket	1
19	BWMLSV30H-019	Middle support bracket	1
20	BWMLSV30H-020	Engine mounting plate	2
21	BWMLSV30H-021	Hex Bolt M12×80	6
22	BWMLSV30H-022	Big Flat Washer Φ8	7
23	BWMLSV30H-023	Hex Lock Nut M12	21
24	BWMLSV30H-024	Hex Bolt M12×40	2
25	BWMLSV30H-025	Flat Washer Φ12	26
26	BWMLSV30H-026	Connecting pipe	2
27	BWMLSV30H-027	Hex Lock Nut M8	21
28	BWMLSV30H-028	Flat Washer Φ8	19
29	BWMLSV30H-029	Hex Bolt M8×90	4
30	BWMLSV30H-030	Caster Wheel	1
31	BWMLSV30H-031	Lift Tube	1
32	BWMLSV30H-032	Hex Bolt M10×30	4
33	BWMLSV30H-033	Lift Screw	1
34	BWMLSV30H-034	Thrust Ball Bearing	1

35	BWMLSV30H-035	Outer Bushing	1
36	BWMLSV30H-036	Hex Bolt M6×60	1
37	BWMLSV30H-037	Hex Lock Nut M6	1
38	BWMLSV30H-038	Slotted Spring Pin D5×30	1
39	BWMLSV30H-039	Jockey Wheel Handle Bushing	1
40	BWMLSV30H-040	Jockey Wheel Handle	1
41	BWMLSV30H-041	Cotter Pin d3.2*25	1
42	BWMLSV30H-042	Safety Pin	1
43	BWMLSV30H-043	Spring	3
44	BWMLSV30H-044	Tow Head Assembly	1
45	BWMLSV30H-045	Hex Bolt M12×90	3
46	BWMLSV30H-046	Safety Chain with Hook	2
47	BWMLSV30H-047	Installation bracket	1
48	BWMLSV30H-048	Wedge	1
49	BWMLSV30H-049	Hex Bolt M8×20	2
50	BWMLSV30H-050	Axe fixing plate	1
51	BWMLSV30H-051	Cylinder	1
52	BWMLSV30H-052	Wedge Pin	2
53	BWMLSV30H-053	U-shaped bolt	1
54	BWMLSV30H-054	Lifting Table	1
55	BWMLSV30H-055	Pipe sleeve	1
56	BWMLSV30H-056	Suspension ear	1
57	BWMLSV30H-057	Hex Bolt M8×16	2
58	BWMLSV30H-058	Pipe sleeve	2
59	BWMLSV30H-059	optical axis	2
60	BWMLSV30H-060	Bearing	4
61	BWMLSV30H-061	Steel Wire Snap Ring for Shaft Φ40	4
62	BWMLSV30H-062	Pallet	1
63	BWMLSV30H-063	Installation board	2
64	BWMLSV30H-064	Round rod	1
65	BWMLSV30H-065	Clamp	2
66	BWMLSV30H-066	Bottom Hose	1
67	BWMLSV30H-067	Big Flat Washer Φ8	4
68	BWMLSV30H-068	Hex Bolt M8×120	4
69	BWMLSV30H-069	Hex Bolt M8×25	6

70	BWMLSV30H-070	Spring Washer $\Phi 8$	10
71	BWMLSV30H-071	Hex Bolt M5 \times 10	4
72	BWMLSV30H-072	Hex Bolt M8 \times 30	4
73	BWMLSV30H-073	Inner Hex Set Screw M6*10	1
74	BWMLSV30H-074	Flat Key 3 \times 3 \times 25	1
75	BWMLSV30H-075	Gear Pump Connector	1
76	BWMLSV30H-076	Engine Connector	1
77	BWMLSV30H-077	Flat Key 5 \times 5 \times 25	1
78	BWMLSV30H-078	Engine Bushing	1
79	BWMLSV30H-079	Shock Pad $\Phi 40 \times 25$	4
80	BWMLSV30H-080	Connector Cover	1
81	BWMLSV30H-081	Gear Pump Connector	1
82	BWMLSV30H-082	Gear Pump Stand	1
83	BWMLSV30H-083	Petrol Engine	1
84	BWMLSV30H-084	Wire rope pulley	2
85	BWMLSV30H-085	Hex Bolt M10 \times 20	2
86	BWMLSV30H-086	Round head cross bolt M8 * 16	6
87	BWMLSV30H-087	Control Valve	1
88	BWMLSV30H-088	Rotating shaft	1
89	BWMLSV30H-089	Round rod	1
90	BWMLSV30H-090	Round rod	1
91	BWMLSV30H-091	Pipe sleeve	1
92	BWMLSV30H-092	Hex Bolt M8 \times 50	3
93	BWMLSV30H-093	Hex Bolt M12 \times 45	2
94	BWMLSV30H-094	Handle ball	2
95	BWMLSV30H-095	Oil Filter	1
96	BWMLSV30H-096	Y Joint	4
97	BWMLSV30H-097	Threaded round rod	2
98	BWMLSV30H-098	Hex Bolt M8 \times 40	4
99	BWMLSV30H-099	O Ring D75*2.4	1
100	BWMLSV30H-100	Hex Bolt M12 \times 55	2
101	BWMLSV30H-101	Plate	1
102	BWMLSV30H-102	Hex Bolt M8 \times 70	1
103	BWMLSV30H-103	Cotter Pin d5*50	4
104	BWMLSV30H-104	Hex Nut M8	4

105	BWMLSV30H-105	Tie rod	1
106	BWMLSV30H-106	Torsion spring	1
107	BWMLSV30H-107	O Ring D80*2.4	1
108	BWMLSV30H-108	Spring Washer Φ 12	2
109	BWMLSV30H-109	Gear pump joint	4
110	BWMLSV30H-110	Return oil pipe	1
111	BWMLSV30H-111	Oil inlet joint	1
112	BWMLSV30H-112	Return oil direct head	1
113	BWMLSV30H-113	Shackle M8	1
114	BWMLSV30H-114	Oil inlet pipe	1
115	BWMLSV30H-115	Hydraulic Hose (Valve - Cylinder)	1
116	BWMLSV30H-116	Hydraulic Hose (Valve - Cylinder)	1
117	BWMLSV30H-117	Return oil right angle joint	1
118	BWMLSV30H-118	Valve oil outlet straight joint	1

Customer Service:

303 Warrigal Road, Cheltenham, Victoria 3192, Australia

Telephone: 13000 454 585

Website: www.BWMachinery.com.au

Email: admin@bwmachinery.com.au

Spare parts are available from our dealers and our official website