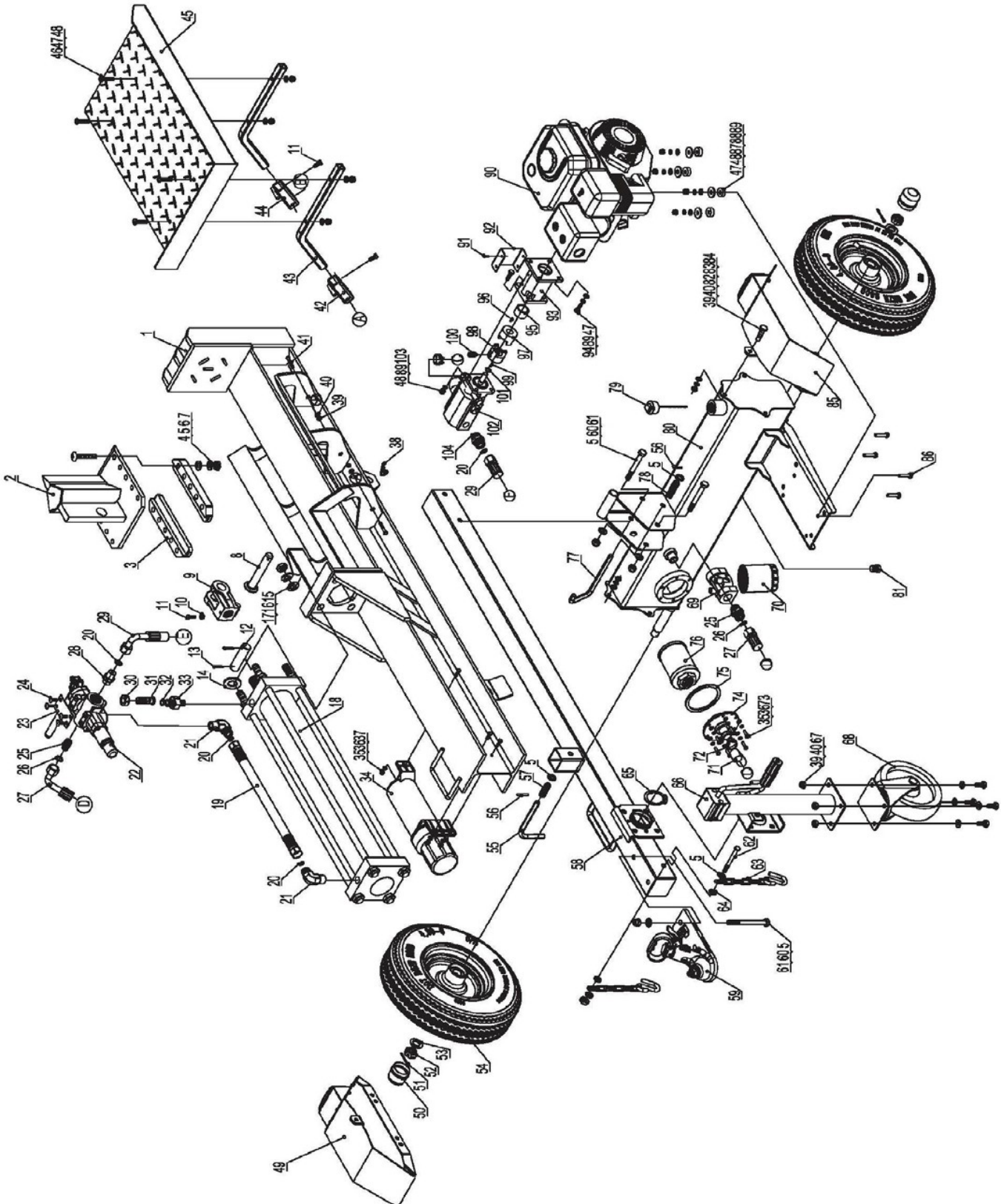


BWM LSE30

Spare Parts Diagram



Ref #	Part No.	Description	Qty
1	BWMLSE300001	Beam Weldment	1
2	BWMLSE300002	Wedge	1
3	BWMLSE300003	Keeper Spacer	2
4	BWMLSE300004	Screw M12x55	10
5	BWMLSE300005	Flat Washer Ø12	18
6	BWMLSE300006	Lock Washer Ø12	10
7	BWMLSE300007	Hex Thick Nut M12	10
8	BWMLSE300008	Hitch Pin	1
9	BWMLSE300009	Piston Head Joint	1
10	BWMLSE300010	Hex Nut M8	1
11	BWMLSE300011	Hex Bolt M8x20	3
12	BWMLSE300012	Wedge Pin	1
13	BWMLSE300013	Cotter Pin Ø4x40	2
14	BWMLSE300014	Adjusting Washer C	/
15	BWMLSE300015	Flat Washer Ø18	4
16	BWMLSE300016	Lock Washer Ø18	4
17	BWMLSE300017	Hex Nut M18	4
18	BWMLSE300018	Cylinder	1
19	BWMLSE300019	Hydraulic Hose (Valve-Cylinder)	1
20	BWMLSE300020	O Ring Ø11x2.5	4
21	BWMLSE300021	Angle Connector	2
22	BWMLSE300022	Control Valve	1
23	BWMLSE300023	Plate	1
24	BWMLSE300024	Screw M8x10	4
25	BWMLSE300025	Oil Return Connector	2
26	BWMLSE300026	O Ring Ø14x2.5	2
27	BWMLSE300027	Hydraulic Hose (Valve-Oil Return Filter)	1
28	BWMLSE300028	Connector	1
29	BWMLSE300029	Hydraulic Hose (Valve-Pump)	1
30	BWMLSE300030	Nut	1
31	BWMLSE300031	Valve B Connector	1
32	BWMLSE300032	O Ring Ø16x2.5	1
33	BWMLSE300033	Cylinder Head Connector	1
34	BWMLSE300034	Manual Canister	1
35	BWMLSE300035	Hex Bolt M6x20	9
36	BWMLSE300036	Flat Washer Ø6	9
37	BWMLSE300037	Nylon Lock Nut M6	3
38	BWMLSE300038	R Pin	1
39	BWMLSE300039	Nylon Lock Nut M10	12

40	BWMLSE300040	Flat Washer Ø10	12
41	BWMLSE300041	Hex Bolt M10x50	2
42	BWMLSE300042	Square Tube (Left)	1
43	BWMLSE300043	Table Stand	2
44	BWMLSE300044	Square Tube (Right)	1
45	BWMLSE300045	Log Table	1
46	BWMLSE300046	Screw M8x35	4
47	BWMLSE300047	Flat Washer Ø8	12
48	BWMLSE300048	Nylon Lock Nut M8	12
49	BWMLSE300049	Left Fender	1
50	BWMLSE300050	Axle Cap	2
51	BWMLSE300051	Cotter Pin Ø4x36	2
52	BWMLSE300052	Hex Slotted Nut M20	2
53	BWMLSE300053	Flat Washer Ø20	2
54	BWMLSE300054	Wheel	2
55	BWMLSE300055	Safety Pin	1
56	BWMLSE300056	Cotter Pin Ø3x30	2
57	BWMLSE300057	Spring	1
58	BWMLSE300058	Tow Bar	1
59	BWMLSE300059	Coupling	1
60	BWMLSE300060	Hex Bolt M12x100	4
61	BWMLSE300061	Nylon Lock Nut M12	5
62	BWMLSE300062	Hex Bolt M12x110	1
63	BWMLSE300063	Chain with Hook	2
64	BWMLSE300064	Thick Flat Washer Ø12	2
65	BWMLSE300065	Circlips for Shaft Ø62	1
66	BWMLSE300066	Front Support Leg	1
67	BWMLSE300067	Hex Bolt M10x25	4
68	BWMLSE300068	6" Jockey Wheel	1
69	BWMLSE300069	Aluminum Base	1
70	BWMLSE300070	Filter	1
71	BWMLSE300071	Oil Pipe	1
72	BWMLSE300072	Clamp	2
73	BWMLSE300073	Lock Washer Ø6	6
74	BWMLSE300074	Filter Mounting Plate	1
75	BWMLSE300075	Rubber Washer	1
76	BWMLSE300076	Oil Filter	1
77	BWMLSE300077	Safety Pin	1
78	BWMLSE300078	Spring	1
79	BWMLSE300079	Oil Bolt	1
80	BWMLSE300080	Oil Tank	1

81	BWMLSE300081	Oil Plug	1
82	BWMLSE300082	Hex Bolt M10x30	6
83	BWMLSE300083	Rubber 2	6
84	BWMLSE300084	Lock Washer Ø10	6
85	BWMLSE300085	Right Fender	1
86	BWMLSE300086	Hex Bolt M8x65	4
87	BWMLSE300087	Polyurethane Block	4
88	BWMLSE300088	Large Flat Washer Ø10	4
89	BWMLSE300089	Lock Washer Ø8	12
90	BWMLSE300090	Engine	1
91	BWMLSE300091	Hex Bolt M5x10	4
92	BWMLSE300092	Coupling Guard	1
93	BWMLSE300093	Gear Pump Stand	1
94	BWMLSE300094	Hex Bolt M8x25	4
95	BWMLSE300095	Engine Bushing	1
96	BWMLSE300096	5x25 Flat Key	1
97	BWMLSE300097	Engine Coupling	1
98	BWMLSE300098	Gear Pump Coupling	1
99	BWMLSE300099	Flat Key	1
100	BWMLSE300100	Screw M6x10	1
101	BWMLSE300101	Steel Wire Snap Ring for Shaft	1
102	BWMLSE300102	Gear Pump13/1.8	1
103	BWMLSE300103	Hex Bolt M8x30	4
104	BWMLSE300104	Connector	1

Customer Service:

303 Warrigal Road, Cheltenham, Victoria 3192, Australia

Telephone: 1300 454 585

Website: www.BWMachinery.com.au

Email: admin@bwmachinery.com.au

Spare parts are available from our dealers and our official website