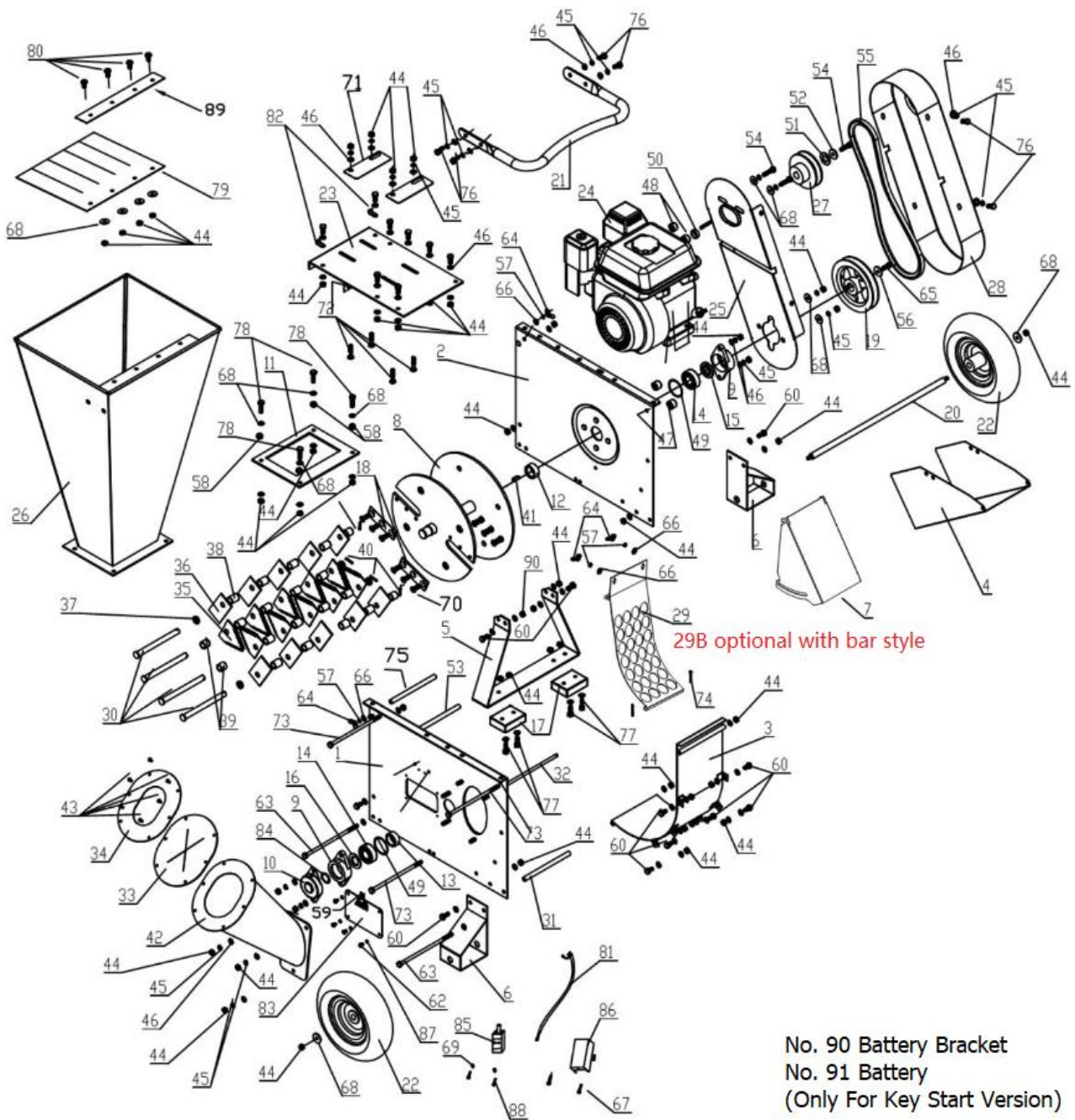


Greatbull GBD601 Series Spare Parts Diagram



Spare Parts List

Ref. No.	Part No.	Description	Quantity
1	GBD601001	Left Housing Panel	1
2	GBD601002	Right Housing Panel	1
3	GBD601003	Chute Rear Plate	1
4	GBD601004	Discharging Chute, Lower	1
5	GBD601005	Front Stand	1
6	GBD601006	Support Stand	2
7	GBD601007	Discharging Chute, Upper	1
8	GBD601008	Blade Disc Assembly (Including Hammers & Blades)	1
9	GBD601009	Bearing	2
10	GBD601010	Bearing Seat Cover	1
11	GBD601011	Chute Rubber Pad, Inward	1
12	GBD601012	Spacer, Right	1
13	GBD601013	Spacer, Left	1
14	GBD601014	Bearing 2205 (25mmx52mmx18mm)	2
15	GBD601015	Right Spacer Ring	1
16	GBD601016	Left Spacer Ring	1
17	GBD601017	Rubber Pad	2
18	GBD601018	Chipping Blade	2
18-1	GBD6010181	Blade Bolt & Nut Set	6
19	GBD601019-A (models GBD601A/AH)	Drive Belt Pulley, Large	1
	GBD601019-C (models GBD601C/CK/CH)	Drive Belt Pulley, Large	1
20	GBD601020	Wheel Axle	1
21	GBD601021	Handle	1
22	GBD601022	Wheel	2

22-1	GBD6010221	Wheel Rim	1
23	GBD601023	Dynamic Retaining Plate	1
24	GBD601024-A (model GBD601A)	Engine, Briggs & Stratton 6.5HP	1
	GBD601024-C (model GBD601C)	Engine, Briggs & Stratton 13.5HP	1
	GBD601024-CK (model GBD601CK)	Engine, Briggs & Stratton 13.5HP (Key Start)	1
	GBD601024-AH (model GBD601AH)	Engine, Honda GX200	1
	GBD601024-CH (model GBD601CH)	Engine, Honda GX390	1
25	GBD601025-A (models GBD601A/AH)	Belt Cover Inner Plate	1
	GBD601025-C (models GBD601C/CK/CH)	Belt Cover Inner Plate	1
26	GBD601026	Feeding Chute	1
27	GBD601027-A (models GBD601A/AH)	Drive Belt Pulley, Small	1
	GBD601027-C (models GBD601C/CK/CH)	Drive Belt Pulley, Small	1
28	GBD601028-A (models GBD601A/AH)	Belt Cover	1
	GBD601028-C (models GBD601C/CK/CH)	Belt Cover	1
29	GBD601029	Fine and Coarse Screen	1
	GBD601029B	Fine and Coarse Screen (Bar Style)	1
30	GBD601030	Shaft, Hammer	4
31	GBD601031	Support Tube	2
32	GBD601032	Supporting Rod	1
33	GBD601033	Side Chute Rubber Pad	1
34	GBD601034-A (models GBD601A/AH)	Chute Flap	1
	GBD601034-C (models GBD601C/CK/CH)	Chute Flap	1
35	GBD601035	Triangular Hammer Blade	10
36	GBD601036	Rectangle Hammer Blade	10

37	GBD601037	Short Spacer	4
38	GBD601038	Long Spacer	16
39	GBD601039	Middle Spacer	4
40	GBD601040	Shaft Pin (n4x25)	4
41	GBD601041	Flat key 8x7x22	1
42	GBD601042-A (models GBD601A/AH)	Side Chute	1
	GBD601042-C (models GBD601C/CK/CH)	Side Chute	1
43	GBD601043	Rivet (n4x15)	6
44	GBD601044	M8 Nylon Locknut	56
45	GBD601045	Spring Washer (n8)	30
46	GBD601046	Flat Washer (n8xn16x1)	4
47	GBD601047	Side Plate Lower Spacer	2
48	GBD601048	Side Plate Upper Spacer	2
49	GBD601049	Bearing Washer	2
50	GBD601050	Pulley Bush, Small	1
51	GBD601051	Pulley Washer, Small	1
52	GBD601052	Flat Washer (n8xn28x3)	1
53	GBD601053	Support Tube	1
54	GBD601054	Engine Bolt	1
55	GBD601055-A	A Belt	1
	GBD601055-C	B Belt	1
56	GBD601056	Flat Washer n10xn32x4	1
57	GBD601057	Spring Washer (n6)	4
58	GBD601058	Rubber Pad	4
59	GBD601059	Split Pin	1
60	GBD601060	M8x20 Six Outer Hexagon Bolt	16
61	GBD601061	Flat Washer n8xn16x1.6	47
62	GBD601062	M5X8 Six Outer Hexagon Bolt	4
63	GBD601063	M8x200 Six Outer Hexagon Bolt	2

64	GBD601064	M6 Wingnut	4
65	GBD601065	M10X20 Six Outer Hexagon Bolt	1
66	GBD601066	N6xn16x1 Flat Washer	4
67	GBD601067	Rivet n6x12	2
68	GBD601068	N8xn24x2 Flat Washer	14
69	GBD601069	N4 Spring Washer	2
70	GBD601070	Inner Six Angle Countersunk Head Screws M8x25	6
71	GBD601071	Splash Plate	2
72	GBD601072-A (models GBD601A/AH)	Cup Head Square Neck Bolts M8x40	4
	GBD601072-C (models GBD601C/CK/CH)	Cup Head Square Neck Bolts M8x40	4
73	GBD601073	M8x190 Six Outer Hexagon Bolt	3
74	GBD601074	Split Pin	2
75	GBD601075	Support Tube	1
76	GBD601076	M8x16 Six Outer Hexagon Bolt	8
77	GBD601077	M8x25 Six Outer Hexagon Bolt	20
78	GBD601078	M8x30 Six Outer Hexagon Bolt	6
79	GBD601079	Flap	1
80	GBD601080	Screw (M8x16)	4
81	GBD601081	Stop Switch Wire	1
82	GBD601082	Hook	2
83	GBD601083	Plate Cover	1
84	GBD601084	N25 Shaft Collar	2
85	GBD601085	Switch	1
86	GBD601086	Switch Box	1
87	GBD601087	Flat Washer n5xn12x1	4
88	GBD601088	M4 Screw	2
89	GBD601089	Collection Bag	1
90	GBD601090 (GBD601CK ONLY)	Battery Bracket	1

91	GBD601091 (GBD601CK ONLY)	Battery	1
92	GBD601092	Blade Drum + Chassis Assy (Including all blades)	1

Customer Service:

303 Warrigal Road, Cheltenham, Victoria 3192, Australia

Telephone: 1300 454 585

Website: www.BWMachinery.com.au

Email: admin@bwmachinery.com.au

Spare parts are available from our dealers and our official website